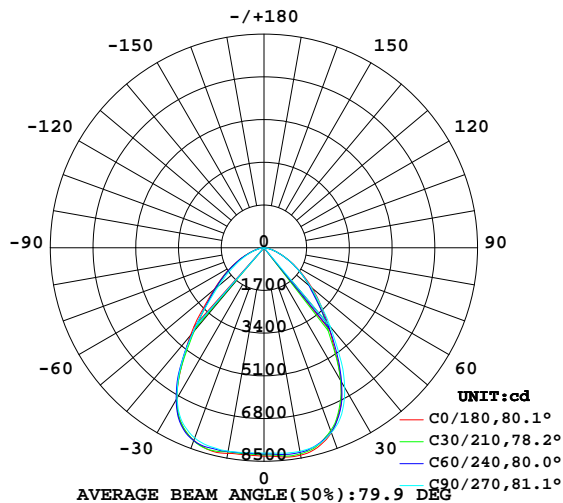


LUMINAIRE PHOTOMETRIC TEST REPORT

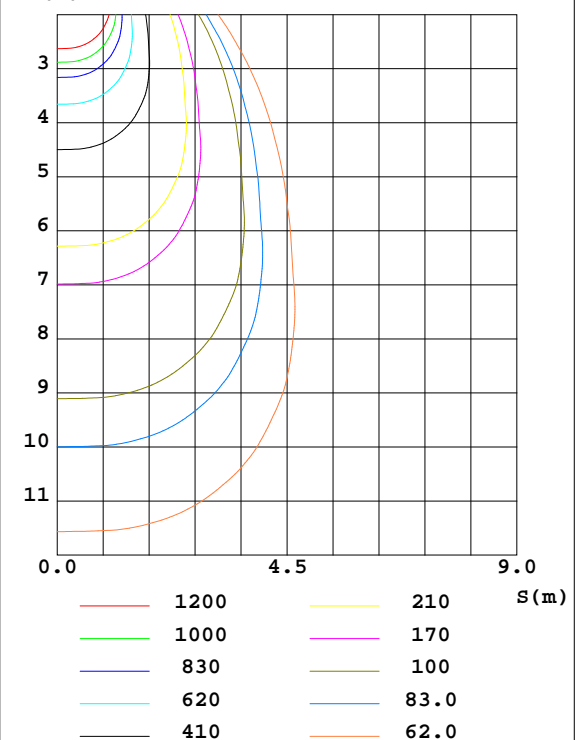
Test:U:231.6V I:0.4443A P:101.8W PF:0.9891 Lamp Flux:15373.8x1 lm		
NAME: 270794	TYPE:	WEIGHT:
DIM.:	SPEC.:	SERIAL No.:
MFR.:	SUR.:0.191	PROTECTION ANGLE:0.14

DATA OF LAMP		PHOTOMETRIC DATA Eff: 151.08 lm/W			
MODEL	270794	I _{max} (cd)	8393	S/MH(C0/180)	1.11
NOMINAL POWER(W)	104	LOR(%)	100.0	S/MH(C90/270)	1.15
RATED VOLTAGE(V)	232	TOTAL FLUX(lm)	15374	η UP,DN(C0-180)	0.0,49.1
NOMINAL FLUX(lm)	15373.8	CIE CLASS	DIRECT	η UP,DN(C180-360)	0.0,50.9
LAMPS INSIDE	1	η up(%)	0.0	CIBSE SHR NOM	1.00
TEST VOLTAGE(V)	231.6	η down(%)	100.0	CIBSE SHR MAX	1.15

LUMINOUS INTENSITY DISTRIBUTION DIAGRAM



C0 PLANE ISOLUX DIAGRAM (UNIT:lx)



C Range: 0 - 360DEG
C Interval: 30.0DEG
Test Speed: HIGH
Temperature:25.3DEG
Operators:DAMIN
Test Date:2022-03-21

γ Range: 0 - 90DEG
γ Interval: 1.0DEG
Test System:EVERFINE GO-2000B_V1 SYSTEM V2.0.267
Humidity:65.0%
Test Distance:6.800m [K=1.0000]
Remarks:

ZONAL FLUX DIAGRAM

ZONAL FLUX DIAGRAM:

γ	C0	C45	C90	C135	C180	C225	C270	C315	γ	Φ zone	Φ total	lum, lamp
10	8383	8301	8226	8163	8312	8243	8218	8209	0- 10	785.6	785.6	5.11,5.11
20	7834	7777	7832	7962	8158	8172	8057	7845	10- 20	2310	3096	20.1,20.1
30	6105	6138	6421	6606	6930	6969	6916	6392	20- 30	3391	6486	42.2,42.2
40	3934	3843	4119	4107	4553	4358	4408	4033	30- 40	3327	9814	63.8,63.8
50	2506	2356	2436	2440	2599	2521	2348	2411	40- 50	2465	12279	79.9,79.9
60	1396	1361	1359	1384	1450	1409	1253	1358	50- 60	1678	13957	90.8,90.8
70	636.2	601.3	609.5	623.0	630.8	613.8	549.7	581.0	60- 70	952.0	14909	97,97
80	178.2	174.3	182.1	184.6	184.4	179.7	167.8	165.3	70- 80	384.7	15294	99.5,99.5
90	12.09	10.43	12.12	11.80	13.51	15.02	13.79	13.79	80- 90	80.21	15374	100,100
100									90-100			
110									100-110			
120									110-120			
130									120-130			
140									130-140			
150									140-150			
160									150-160			
170									160-170			
180									170-180			
DEG	LUMINOUS INTENSITY:cd									UNIT:lm		

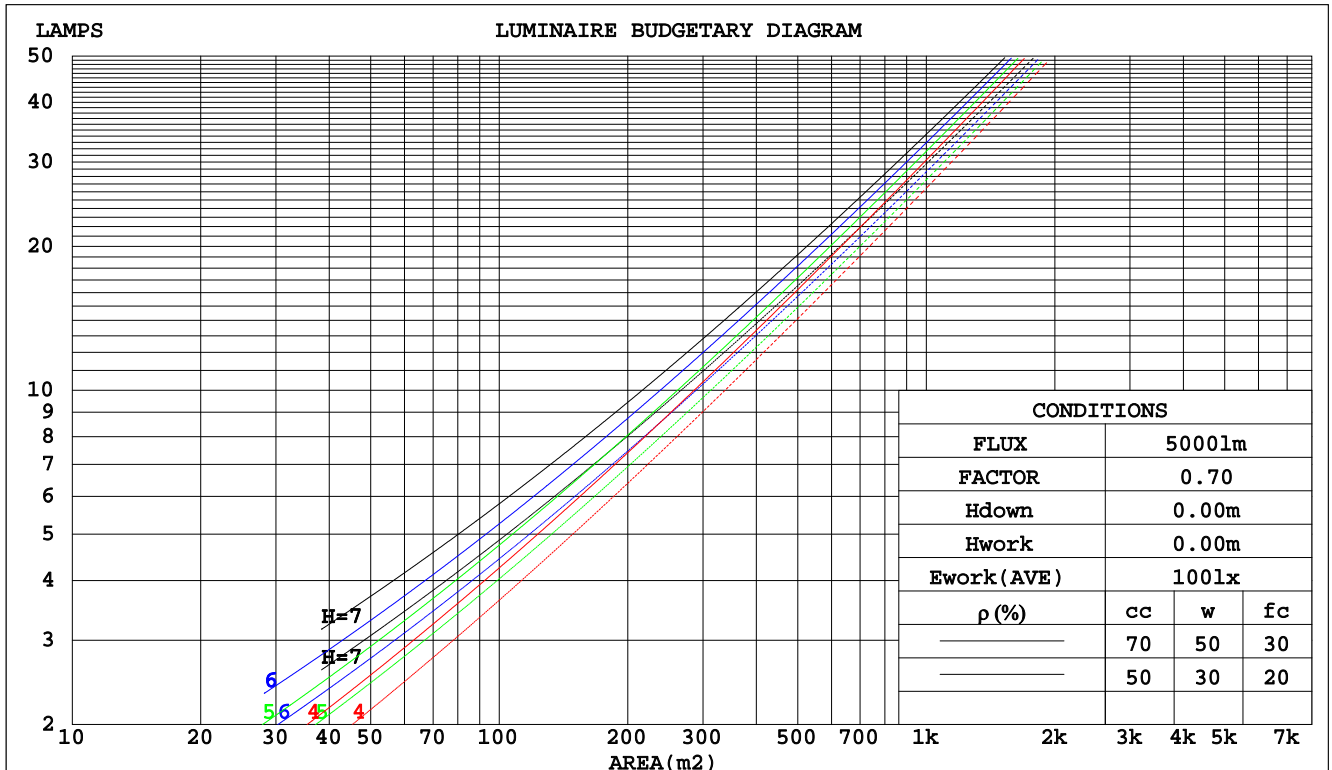
C Range: 0 - 360DEG
C Interval: 30.0DEG
Test Speed: HIGH
Temperature:25.3DEG
Operators:DAMIN
Test Date:2022-03-21

γ Range: 0 - 90DEG
γ Interval: 1.0DEG
Test System:EVERFINE GO-2000B_V1 SYSTEM V2.0.267
Humidity:65.0%
Test Distance:6.800m [K=1.0000]
Remarks:

CU AND LUMINAIRE BUDGETARY ESTIMATE DIAGRAM

Test:U:231.6V I:0.4443A P:101.8W PF:0.9891 Lamp Flux:15373.8x1 lm		
NAME: 270794	TYPE:	WEIGHT:
DIM.:	SPEC.:	SERIAL No.:
MFR.:	SUR.:0.191	PROTECTION ANGLE:0.14

pcc	80%			70%			50%			30%			10%			0
pw	50%	30%	10%	50%	30%	10%	50%	30%	10%	50%	30%	10%	50%	30%	10%	0
pfc	20%			20%			20%			20%			20%			0
RCR	RCR:Room Cavity Ratio															



C Range: 0 - 360DEG
 C Interval: 30.0DEG
 Test Speed: HIGH
 Temperature:25.3DEG
 Operators:DAMIN
 Test Date:2022-03-21

γ Range: 0 - 90DEG
 γ Interval: 1.0DEG
 Test System:EVERFINE GO-2000B_V1 SYSTEM V2.0.267
 Humidity:65.0%
 Test Distance:6.800m [K=1.0000]
 Remarks:

WEC AND CCEC

Test:U:231.6V I:0.4443A P:101.8W PF:0.9891 Lamp Flux:15373.8x1 lm								
NAME: 270794				TYPE:			WEIGHT:	
DIM.:				SPEC.:			SERIAL No.:	
MFR.:				SUR.:0.191			PROTECTION ANGLE:0.14	

pcc	80%			70%			50%			30%			10%			0
pw	50%	30%	10%	50%	30%	10%	50%	30%	10%	50%	30%	10%	50%	30%	10%	0
pfc	20%			20%			20%			20%			20%			0
RCR	RCR:Room Cavity Ratio						Wall Exitance Coefficients(WEC)									
0.0																
1.0	.243	.138	.044	.236	.135	.043	.223	.128	.041	.212	.122	.039	.201	.116	.037	
2.0	.235	.129	.039	.229	.126	.039	.218	.121	.038	.207	.116	.036	.198	.112	.035	
3.0	.222	.118	.035	.217	.116	.035	.207	.112	.034	.198	.109	.033	.190	.105	.033	
4.0	.209	.109	.032	.205	.107	.032	.196	.104	.031	.188	.101	.030	.181	.098	.030	
5.0	.197	.100	.029	.193	.099	.029	.185	.096	.028	.178	.094	.028	.171	.092	.027	
6.0	.185	.093	.027	.181	.092	.026	.175	.089	.026	.168	.087	.026	.162	.085	.025	
7.0	.174	.086	.024	.171	.085	.024	.165	.083	.024	.159	.082	.024	.154	.080	.024	
8.0	.165	.080	.023	.162	.080	.023	.156	.078	.022	.151	.077	.022	.146	.075	.022	
9.0	.156	.075	.021	.153	.075	.021	.148	.073	.021	.144	.072	.021	.139	.071	.020	
10.0	.148	.071	.020	.145	.070	.020	.141	.069	.019	.137	.068	.019	.133	.067	.019	

pcc	80%			70%			50%			30%			10%			0
pw	50%	30%	10%	50%	30%	10%	50%	30%	10%	50%	30%	10%	50%	30%	10%	0
pfc	20%			20%			20%			20%			20%			0
RCR	RCR:Room Cavity Ratio						Ceiling Cavity Exitance Coefficients(CCEC)									
0.0	.190	.190	.190	.163	.163	.163	.111	.111	.111	.064	.064	.064	.020	.020	.020	
1.0	.176	.157	.140	.150	.135	.120	.103	.093	.083	.059	.054	.048	.019	.017	.016	
2.0	.165	.132	.105	.141	.114	.091	.097	.079	.063	.056	.046	.037	.018	.015	.012	
3.0	.155	.114	.081	.133	.098	.070	.091	.068	.049	.053	.040	.029	.017	.013	.010	
4.0	.147	.100	.064	.126	.086	.056	.087	.060	.039	.050	.035	.023	.016	.011	.008	
5.0	.139	.089	.052	.120	.077	.045	.082	.054	.032	.048	.032	.019	.015	.010	.006	
6.0	.133	.081	.043	.114	.070	.038	.079	.049	.027	.046	.029	.016	.015	.009	.005	
7.0	.126	.073	.037	.109	.064	.032	.075	.045	.023	.044	.026	.013	.014	.009	.004	
8.0	.120	.068	.031	.104	.059	.027	.072	.041	.019	.042	.024	.012	.013	.008	.004	
9.0	.115	.063	.027	.099	.054	.024	.068	.038	.017	.040	.023	.010	.013	.007	.003	
10.0	.110	.058	.024	.095	.051	.021	.066	.036	.015	.038	.021	.009	.012	.007	.003	

C Range: 0 - 360DEG
C Interval: 30.0DEG
Test Speed: HIGH
Temperature:25.3DEG
Operators:DAMIN
Test Date:2022-03-21

γ Range: 0 - 90DEG
γ Interval: 1.0DEG
Test System:EVERFINE GO-2000B_V1 SYSTEM V2.0.267
Humidity:65.0%
Test Distance:6.800m [K=1.0000]
Remarks:

Uncorrected UGR Table

Test:U:231.6V I:0.4443A P:101.8W PF:0.9891 Lamp Flux:15373.8x1 lm											
NAME: 270794					TYPE:			WEIGHT:			
DIM.:					SPEC.:			SERIAL No.:			
MFR.:					SUR.:0.191			PROTECTION ANGLE:0.14			
ceiling/cavity	0.7	0.7	0.5	0.5	0.3	0.7	0.7	0.5	0.5	0.3	
walls	0.5	0.3	0.5	0.3	0.3	0.5	0.3	0.5	0.3	0.3	
working plane	0.2	0.2	0.2	0.2	0.2	0.2	0.2	0.2	0.2	0.2	
Room dimensions		Viewed crosswise					Viewed endwise				
x = 2H y = 2H	2H	28.6	29.9	28.8	30.1	30.2	28.6	29.8	28.8	30.0	30.2
	3H	29.2	30.4	29.5	30.6	30.8	29.2	30.4	29.4	30.6	30.8
	4H	29.4	30.5	29.7	30.8	31.0	29.3	30.4	29.6	30.7	30.9
	6H	29.5	30.5	29.8	30.8	31.0	29.4	30.4	29.7	30.7	31.0
	8H	29.5	30.5	29.8	30.7	31.0	29.4	30.4	29.7	30.7	31.0
	12H	29.4	30.4	29.8	30.7	31.0	29.4	30.3	29.7	30.6	30.9
4H	2H	28.8	30.0	29.1	30.2	30.4	28.8	29.9	29.1	30.2	30.4
	3H	29.6	30.6	30.0	30.9	31.2	29.6	30.5	29.9	30.8	31.1
	4H	29.9	30.8	30.2	31.1	31.4	29.8	30.7	30.2	31.0	31.3
	6H	30.0	30.8	30.4	31.1	31.5	29.9	30.7	30.3	31.1	31.4
	8H	30.0	30.7	30.4	31.1	31.5	30.0	30.7	30.4	31.0	31.4
	12H	30.0	30.7	30.4	31.1	31.5	30.0	30.6	30.4	31.0	31.4
8H	4H	29.9	30.6	30.3	31.0	31.4	29.8	30.6	30.2	30.9	31.3
	6H	30.1	30.7	30.5	31.1	31.5	30.0	30.6	30.5	31.0	31.4
	8H	30.1	30.7	30.6	31.1	31.5	30.1	30.6	30.5	31.0	31.5
	12H	30.2	30.6	30.6	31.1	31.5	30.1	30.6	30.6	31.0	31.5
12H	4H	29.9	30.5	30.3	30.9	31.3	29.8	30.5	30.2	30.8	31.2
	6H	30.1	30.6	30.5	31.0	31.5	30.0	30.5	30.5	31.0	31.4
	8H	30.1	30.6	30.6	31.0	31.5	30.1	30.5	30.6	31.0	31.4
Variations with the observer position at spacings:											
S = 1.0H	+ 0.5 / - 0.6					+ 0.5 / - 0.7					
1.5H	+ 0.2 / - 0.4					+ 0.4 / - 0.4					
2.0H	+ 1.0 / - 0.9					+ 0.9 / - 0.9					

CIE Pub.117 Corrected 15374 lm Total Lamp Luminous Flux.(8log(F/F0) = 9.5)

C Range: 0 - 360DEG
C Interval: 30.0DEG
Test Speed: HIGH
Temperature:25.3DEG
Operators:DAMIN
Test Date:2022-03-21

γ Range: 0 - 90DEG
γ Interval: 1.0DEG
Test System:EVERFINE GO-2000B_V1 SYSTEM V2.0.267
Humidity:65.0%
Test Distance:6.800m [K=1.0000]
Remarks:

UTILIZATION FACTORS TABLE

Test:U:231.6V I:0.4443A P:101.8W PF:0.9891 Lamp Flux:15373.8x1 lm		
NAME: 270794	TYPE:	WEIGHT:
DIM.:	SPEC.:	SERIAL No.:
MFR.:	SUR.:0.191	PROTECTION ANGLE:0.14

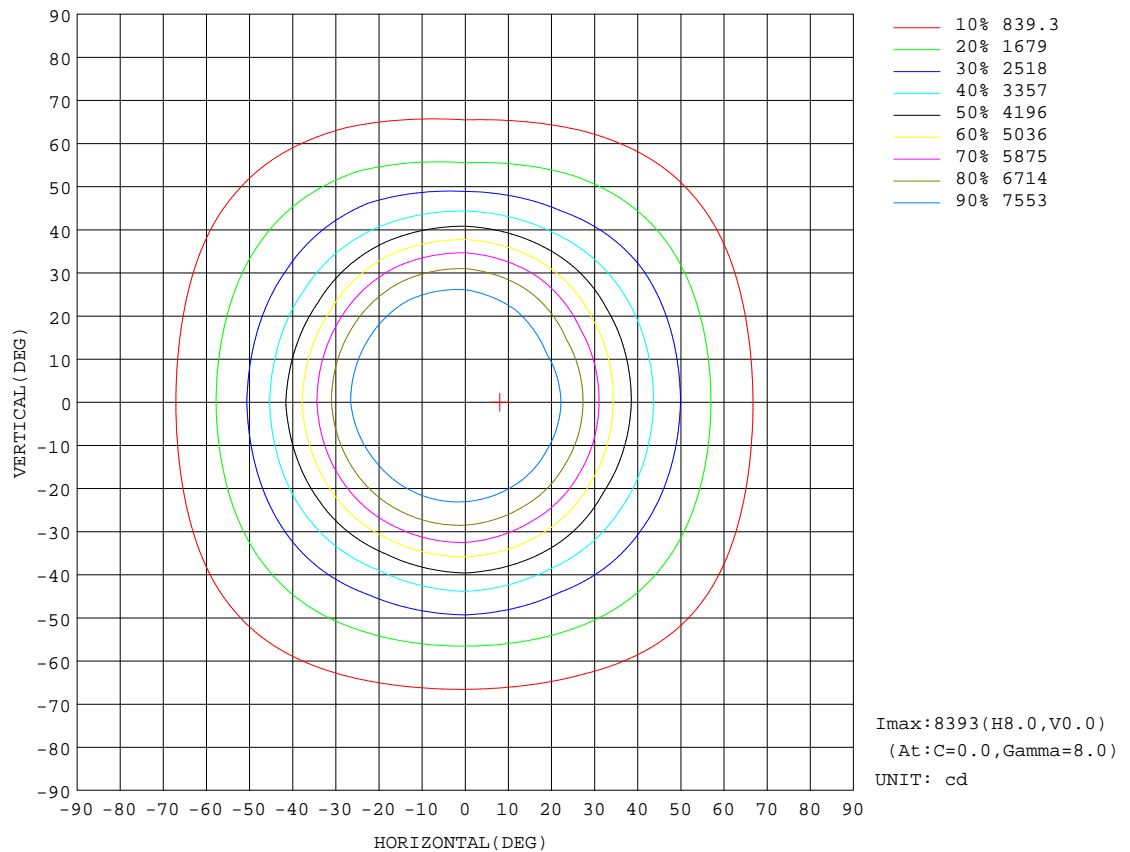
REFLECTANCE										
Ceiling	0.8	0.8	0.8	0.7	0.7	0.7	0.5	0.5	0.5	0
Walls	0.7	0.5	0.3	0.7	0.5	0.3	0.7	0.5	0.3	0
Working plane	0.2	0.2	0.2	0.2	0.2	0.2	0.2	0.2	0.2	0
ROOM INDEX	UTILIZATION FACTORS(PERCENT) $k(RI) \times RCR = 5$									
k = 0.60	69	59	53	68	59	53	67	59	53	48
0.80	78	69	63	78	69	63	76	68	63	57
1.00	86	77	71	85	77	71	83	77	71	65
1.25	92	84	78	91	83	78	88	82	77	71
1.50	96	89	83	95	88	83	92	86	82	75
2.00	101	95	90	100	94	89	97	92	88	81
2.50	104	98	94	102	97	93	99	94	91	84
3.00	107	102	97	105	100	96	101	97	94	87
4.00	110	106	102	108	104	101	104	101	98	90
5.00	112	108	105	109	106	103	105	103	100	92
ROOM INDEX	UF(total)									Direct
According to DIN EN 13032-2 2004			Suspended					SHRNOM = 1.25		

C Range: 0 - 360DEG
C Interval: 30.0DEG
Test Speed: HIGH
Temperature:25.3DEG
Operators:DAMIN
Test Date:2022-03-21

γ Range: 0 - 90DEG
 γ Interval: 1.0DEG
Test System:EVERFINE GO-2000B_V1 SYSTEM V2.0.267
Humidity:65.0%
Test Distance:6.800m [K=1.0000]
Remarks:

ISOCANDELA DIAGRAM

Test:U:231.6V I:0.4443A P:101.8W PF:0.9891 Lamp Flux:15373.8x1 lm		
NAME: 270794	TYPE:	WEIGHT:
DIM.:	SPEC.:	SERIAL No.:
MFR.:	SUR.:0.191	PROTECTION ANGLE:0.14



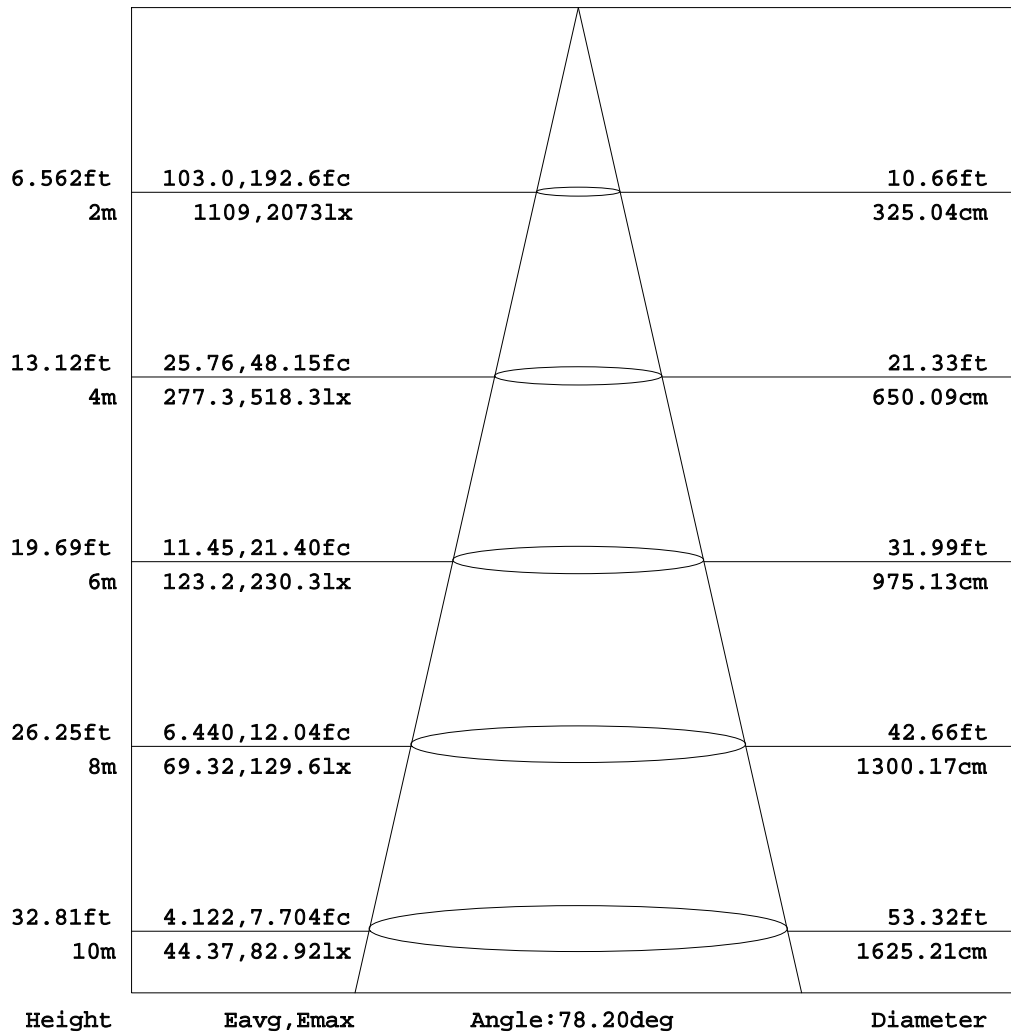
C Range: 0 - 360DEG
C Interval: 30.0DEG
Test Speed: HIGH
Temperature:25.3DEG
Operators:DAMIN
Test Date:2022-03-21

γ Range: 0 - 90DEG
 γ Interval: 1.0DEG
Test System:EVERFINE GO-2000B_V1 SYSTEM V2.0.267
Humidity:65.0%
Test Distance:6.800m [K=1.0000]
Remarks:

AAI Figure

Test:U:231.6V I:0.4443A P:101.8W PF:0.9891 Lamp Flux:15373.8x1 lm		
NAME: 270794	TYPE:	WEIGHT:
DIM.:	SPEC.:	SERIAL No.:
MFR.:	SUR.:0.191	PROTECTION ANGLE:0.14

Flux out:9814 lm



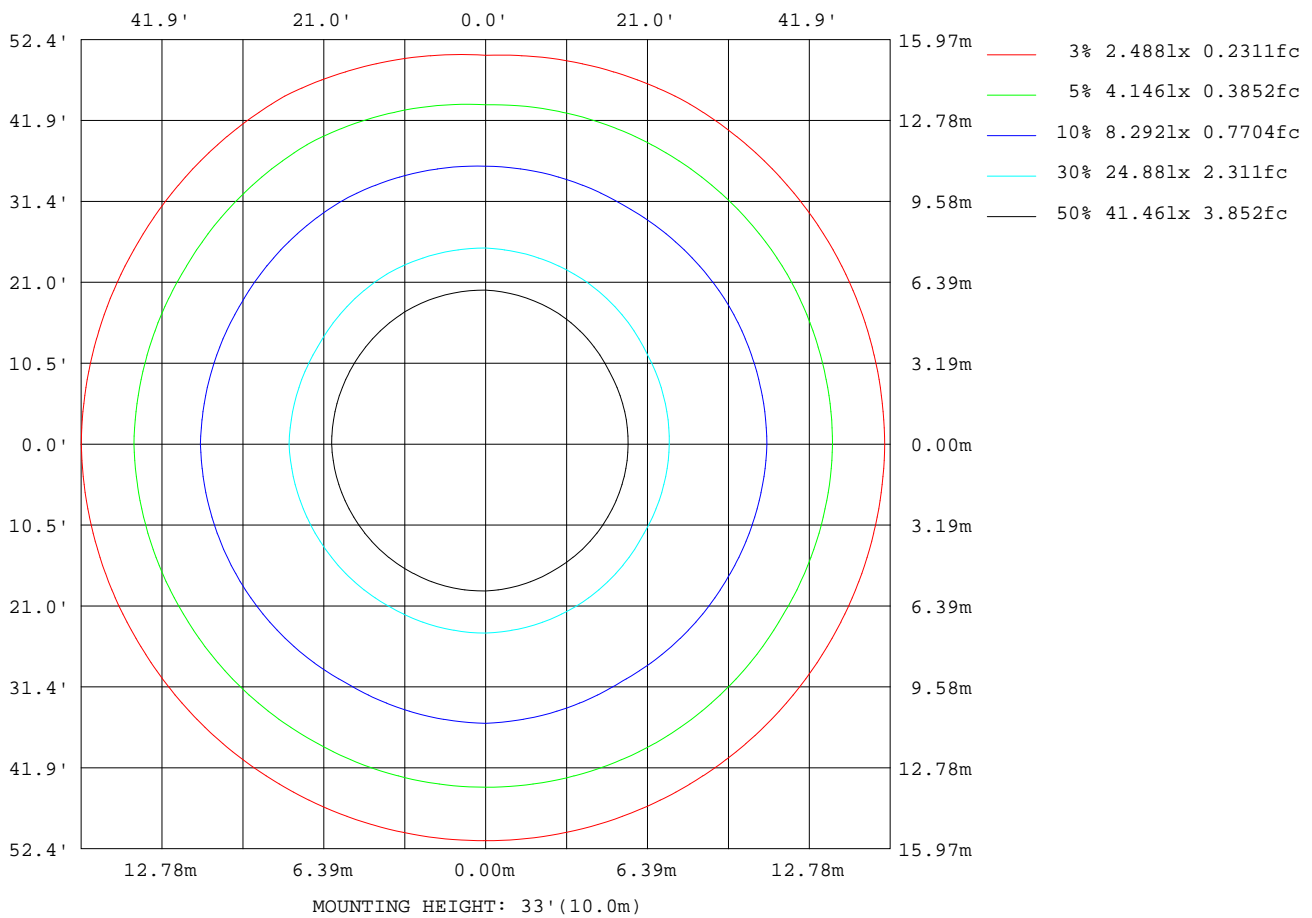
Note:The Curves indicate the illuminated area and the average illumination when the luminaire is at different distance.

C Range: 0 - 360DEG
C Interval: 30.0DEG
Test Speed: HIGH
Temperature:25.3DEG
Operators:DAMIN
Test Date:2022-03-21

γ Range: 0 - 90DEG
γ Interval: 1.0DEG
Test System:EVERFINE GO-2000B_V1 SYSTEM V2.0.267
Humidity:65.0%
Test Distance:6.800m [K=1.0000]
Remarks:

ISOLUX DIAGRAM

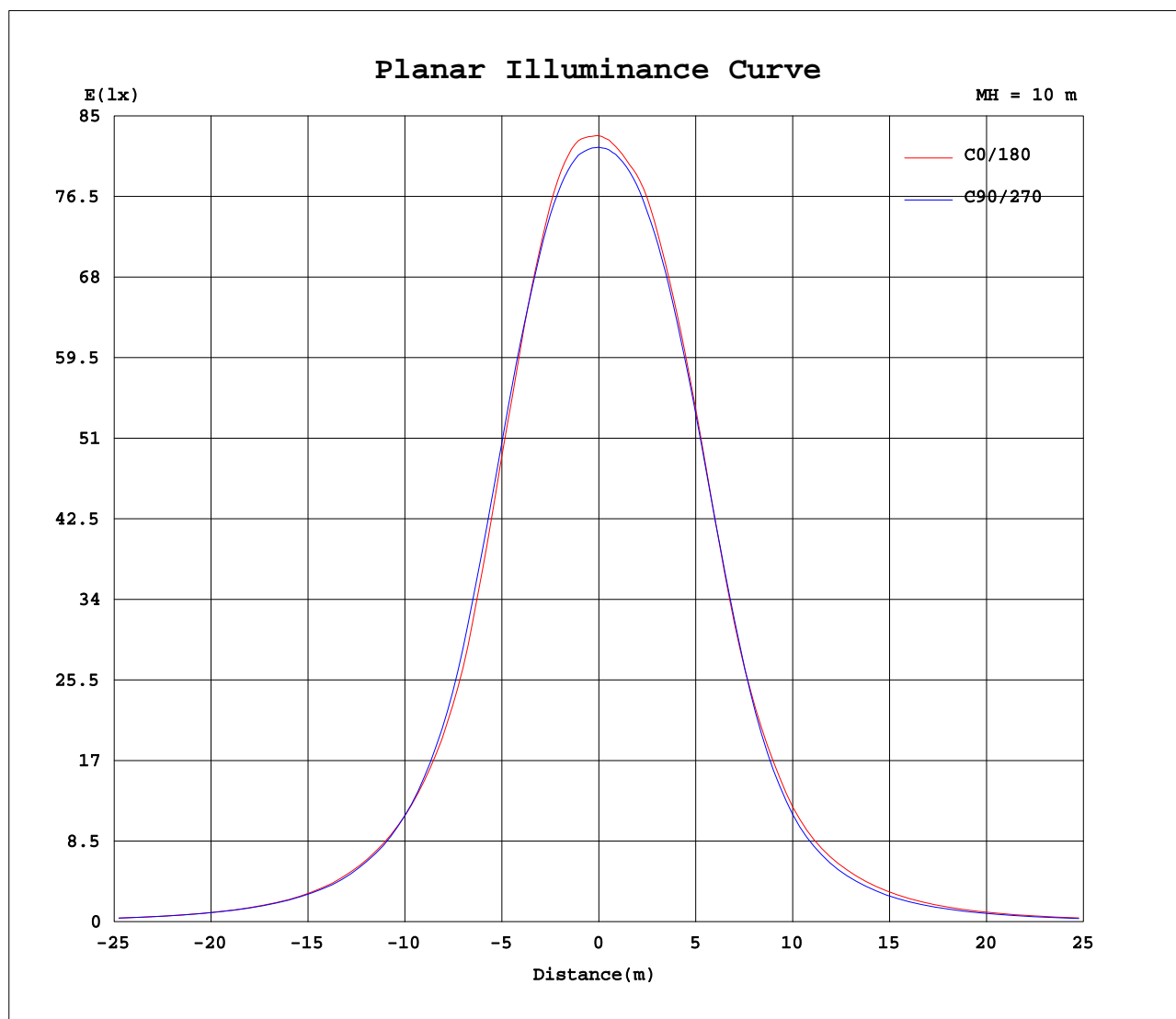
Test:U:231.6V I:0.4443A P:101.8W PF:0.9891 Lamp Flux:15373.8x1 lm		
NAME: 270794	TYPE:	WEIGHT:
DIM.:	SPEC.:	SERIAL No.:
MFR.:	SUR.:0.191	PROTECTION ANGLE:0.14



C Range: 0 - 360DEG
 C Interval: 30.0DEG
 Test Speed: HIGH
 Temperature:25.3DEG
 Operators:DAMIN
 Test Date:2022-03-21

γ Range: 0 - 90DEG
 γ Interval: 1.0DEG
 Test System:EVERFINE GO-2000B_V1 SYSTEM V2.0.267
 Humidity:65.0%
 Test Distance:6.800m [K=1.0000]
 Remarks:

Planar Illuminance Curve



C Range: 0 - 360DEG
C Interval: 30.0DEG
Test Speed: HIGH
Temperature: 25.3DEG
Operators: DAMIN
Test Date: 2022-03-21

γ Range: 0 - 90DEG
 γ Interval: 1.0DEG
Test System: EVERFINE GO-2000B_V1 SYSTEM V2.0.267
Humidity: 65.0%
Test Distance: 6.800m [K=1.0000]
Remarks:

```

γ Range: 0 - 90DEG
γ Interval: 1.0DEG
Test System:EVERFINE GO-2000B_V1 SYSTEM V2.0.267
Humidity:65.0%
Test Distance:6.800m [K=1.0000]
Remarks:

```